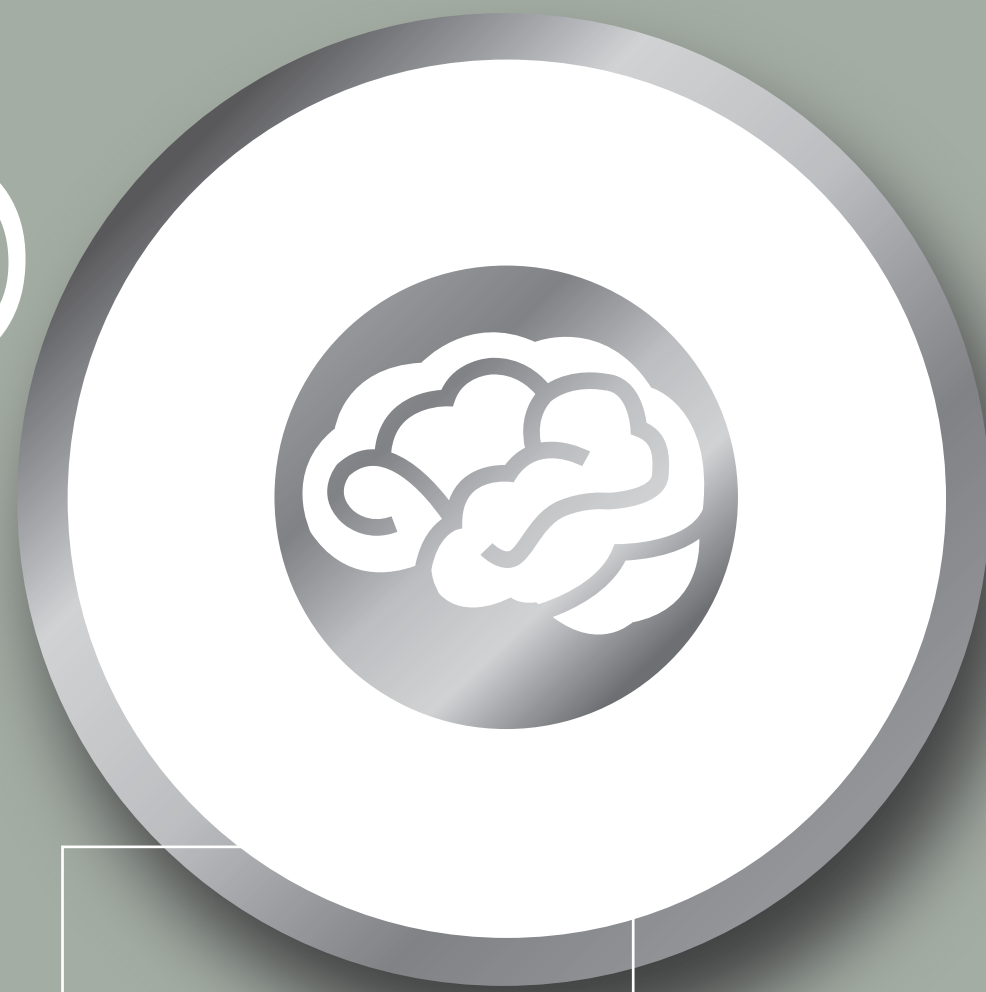


KBRI-POSTECH

SYMP



SIUM

Chair : Hyungju Park (KBRI)

Session 1

- **Satoshi Kojima (KBRI)**
Vocal learning in songbirds: an unique model system for studying speech learning and basal ganglia functions.
- **Seung-Jae V. Lee (POSTECH)**
Regulation of aging by sensory neurons in *C. elegans*
- **Cheol-Sang Hwang (POSTECH)**
The Beginning Determines the End: The N-End Rule Proteolytic System

Chair : Joung Hun Kim (POSTECH)

Session 2

- **Kipom Kim (KBRI)**
Single molecule study of synaptic membrane-fusion machinery using single molecule force spectroscopy
- **Nam Ki Lee (POSTECH)**
The molecular mechanism of the toxicity of alpha-Synuclein oligomers in Parkinson's disease
- **Jinseop S. Kim (KBRI)**
Neuronal diversity in structure and function: anatomical and physiological classification of retinal ganglion cells in the mouse
- **Jae-Joon Kim (POSTECH)**
Reconfigurable Spiking Neural Network Chip Design

2016



오후 1시
한국뇌연구원 대강당